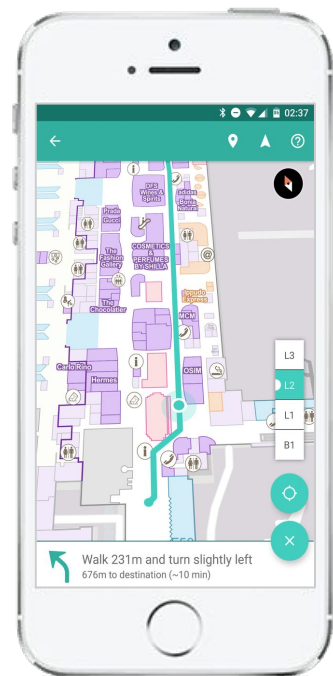


# STEER PATH

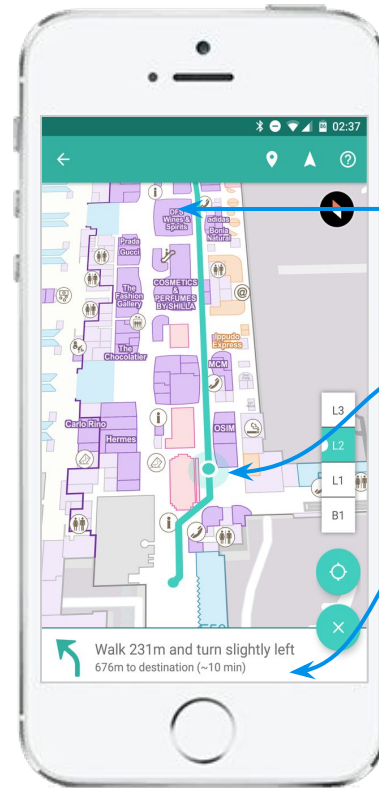
Indoor positioning as a service



- Steerpath enables a new level of services, experiences and brings convenience to venues across domains



Manage in one place,  
publish in every media



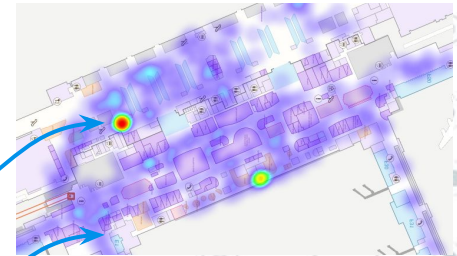
Accurate & beautiful maps

Precise indoor positioning

Personalised wayfinding

Asset tracking

People flow



# Indoor positioning

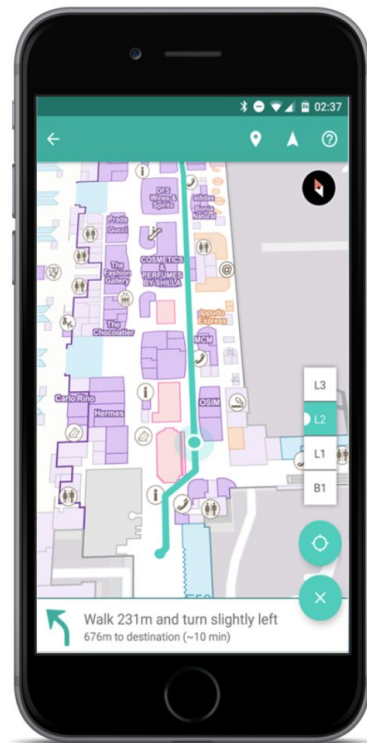
Steerpath indoor positioning provides accurate location services to all iOS and Android devices with Bluetooth. You can think indoor positioning system as an accurate GPS for indoors. Steerpath indoor positioning is used by Airports, hospitals, offices and expo centers. Steerpath indoor positioning system is designed to work in all environments without need for calibrations. Typical accuracy of the system is 2-5m.

## What you get

- The beacons you need, preconfigured
- Professional planning your beacon deployment
- Installation plan
- Bluedot SDK for Android and iOS

## Steerpath benefits

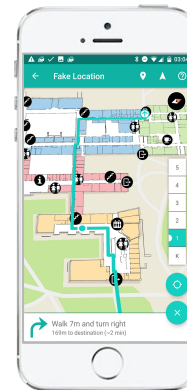
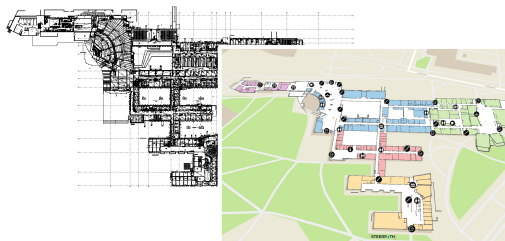
- Easiest large scale installation
- No technical skill required
- Tested in all common environments
- No calibrations required
- Works offline
- Waterproof 4 year beacons



# Drop-shippable Indoor positioning

The cheapest and easiest way to deployment

- ◎ Wirefree installation, no special skill required
- ◎ No beacon configuration or fingerprinting required
- ◎ Battery lifetime 4+ years, remote health monitoring
- ◎ Tested in: Airports, hospitals, expo centers, university campuses, offices, underground, metro stations



2017: **Venue map creation** as a service (CAD, PDF, PNG)  
2018: CAD / PNG -> map web service

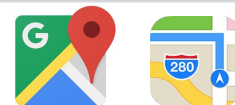
1. Preconfigured **beacons shipped** onsite  
2. Beacons placed by customer/3rd party

**Indoor positioning works**

# Global indoor maps



Edit & update all venues with one tool



Google Maps Apple Maps

Publish to all platforms & applications

# Indoor wayfinding

With Steerpath wayfinding SDK in your mobile app, website and info screens, your visitors can find their way in your venue with ease. It supports many different use cases, from navigating to your connecting flight in an airport to finding a room in a hospital.

## What you get

- Wayfinding SDK for all platforms
- Turn-by-turn instructions
- Intuitive multi-floor routing

## Steerpath benefits

- Tight integration with Steerpath indoor positioning and maps
- Routes between arbitrary points in the venue





The Steerpath indoor analytics system automatically gathers metrics on how your customers use your space. You get daily reports with individual space usage graphs and an overall heat map.

## What you get

- Occupancy graph for each space
- Heatmaps for each floor
- Global view of all your buildings

## Steerpath benefits

- Automatic analytics data collection by the positioning SDK
- No additional hardware or software required



# People and asset tracking



Steerpath's people and asset tracking solution leverages the power of Steerpath positioning to deliver cost efficient tracking that works both indoors and outdoors.

## What you get

- Web dashboard with realtime locations of your assets
- App for staff to view asset locations
- Real time people locations on a map

## Steerpath benefits

- Everything in one global view
- Leverages the same infrastructure as Steerpath indoor positioning
- No extra hardware costs



**#1 Airport in the World**  
Changi airport, Singapore



**#1 University in Finland**  
Aalto University Campus



**Trusted by the most  
demanding customers  
in key domains**

150 000  
Map views in 2 days

26 000  
Wayfindings

> 50%

Active usage without  
monetary incentives

**#1 Startup event in Europe**  
Slush 2014 - 2017

8 floors  
Delivered without  
visiting the site

**HOSPITAL**

US Hospital  
Washington County Hospital (PA)



# Thank you



Tuomas Ilola - CEO

+358 40 548 8190

[tuomas.ilola@steerpath.com](mailto:tuomas.ilola@steerpath.com)